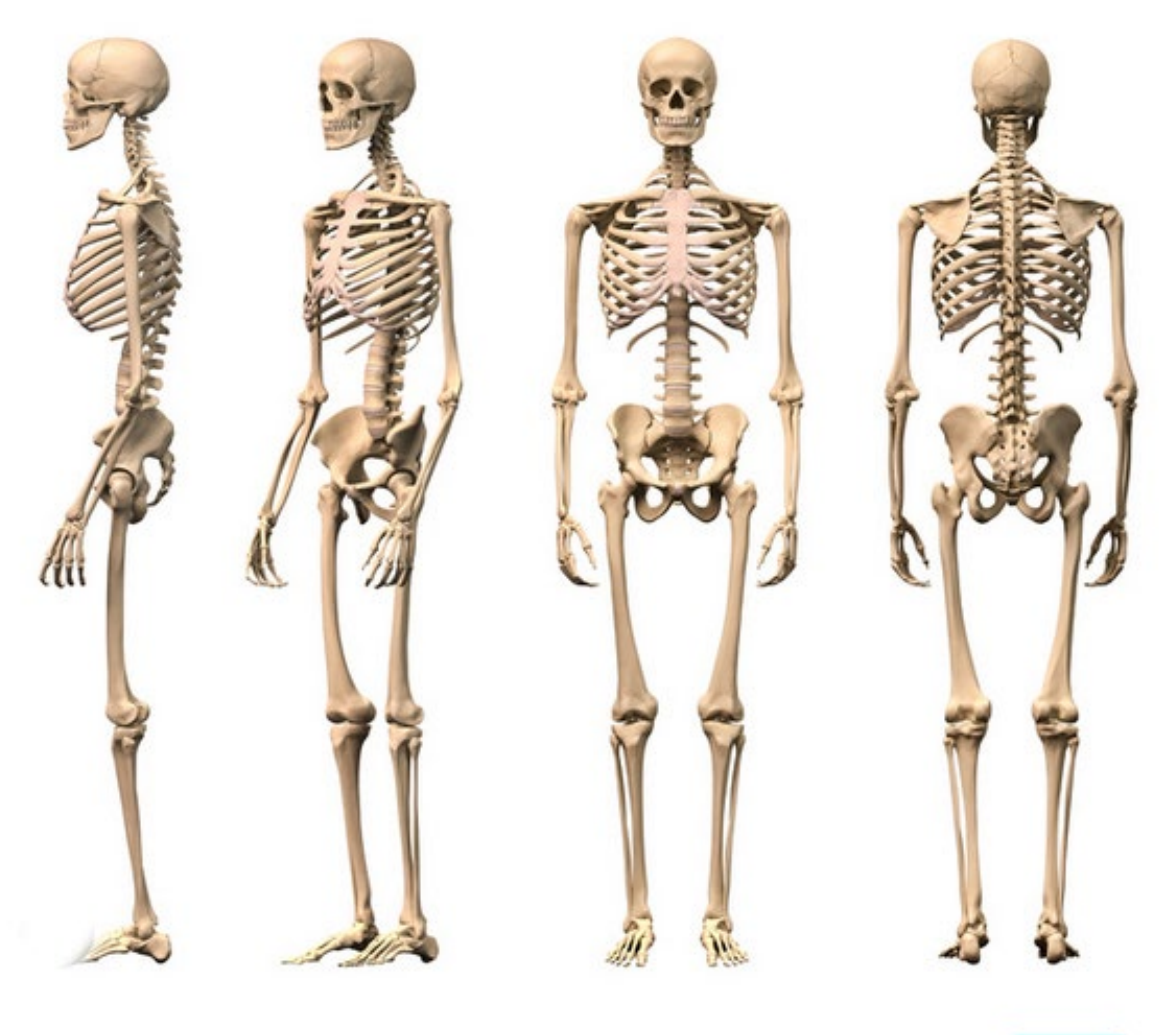
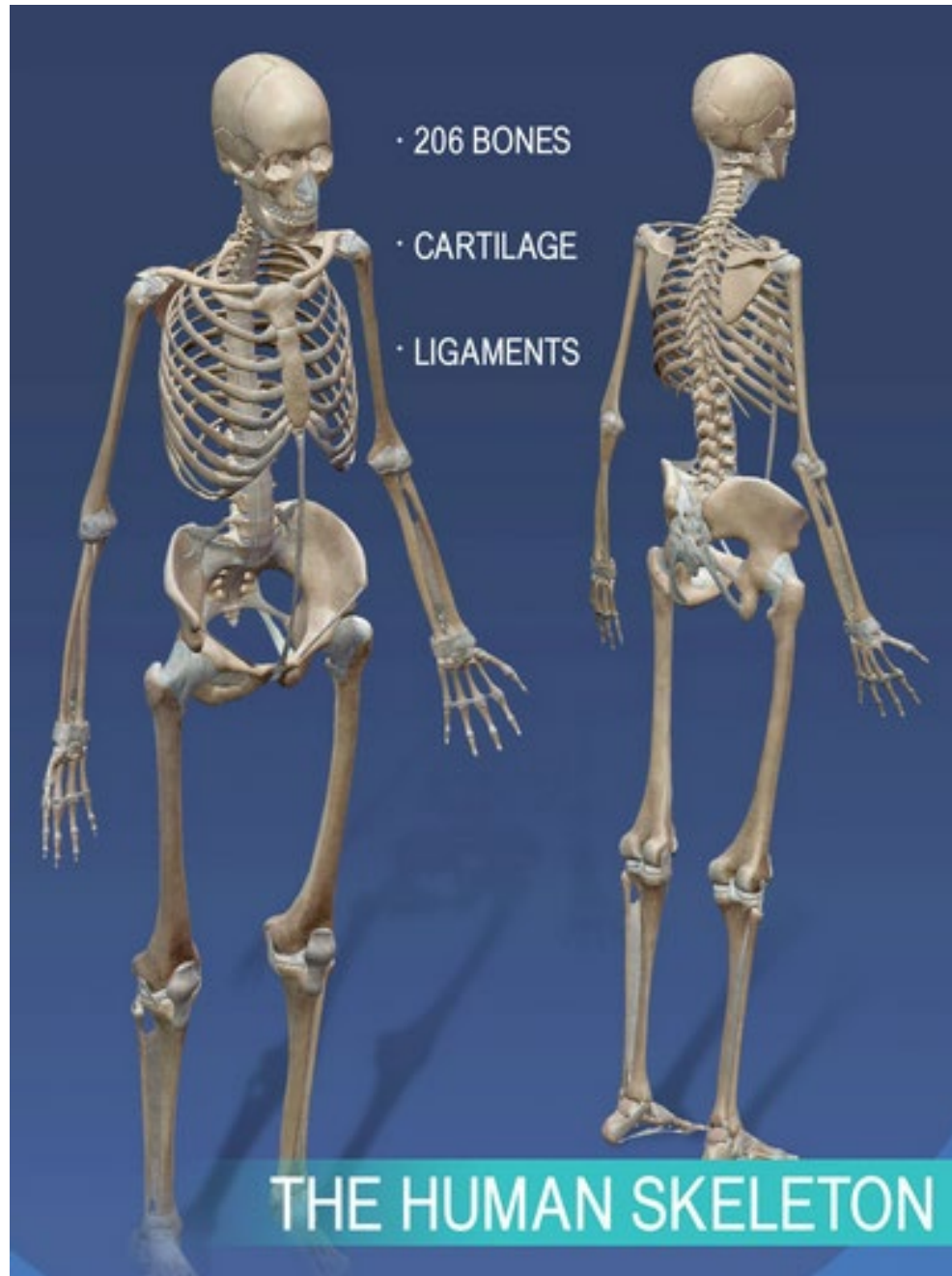


Skeletal Organization

The Axial VS Appendicular Skeleton





At birth we have more than 206 bones. As we age some bones fuse together, so two bones then become one.

Skeletal Organization

- > Pectoral girdle
- > Upper limbs
- > Pelvic girdle
- > Lower limbs

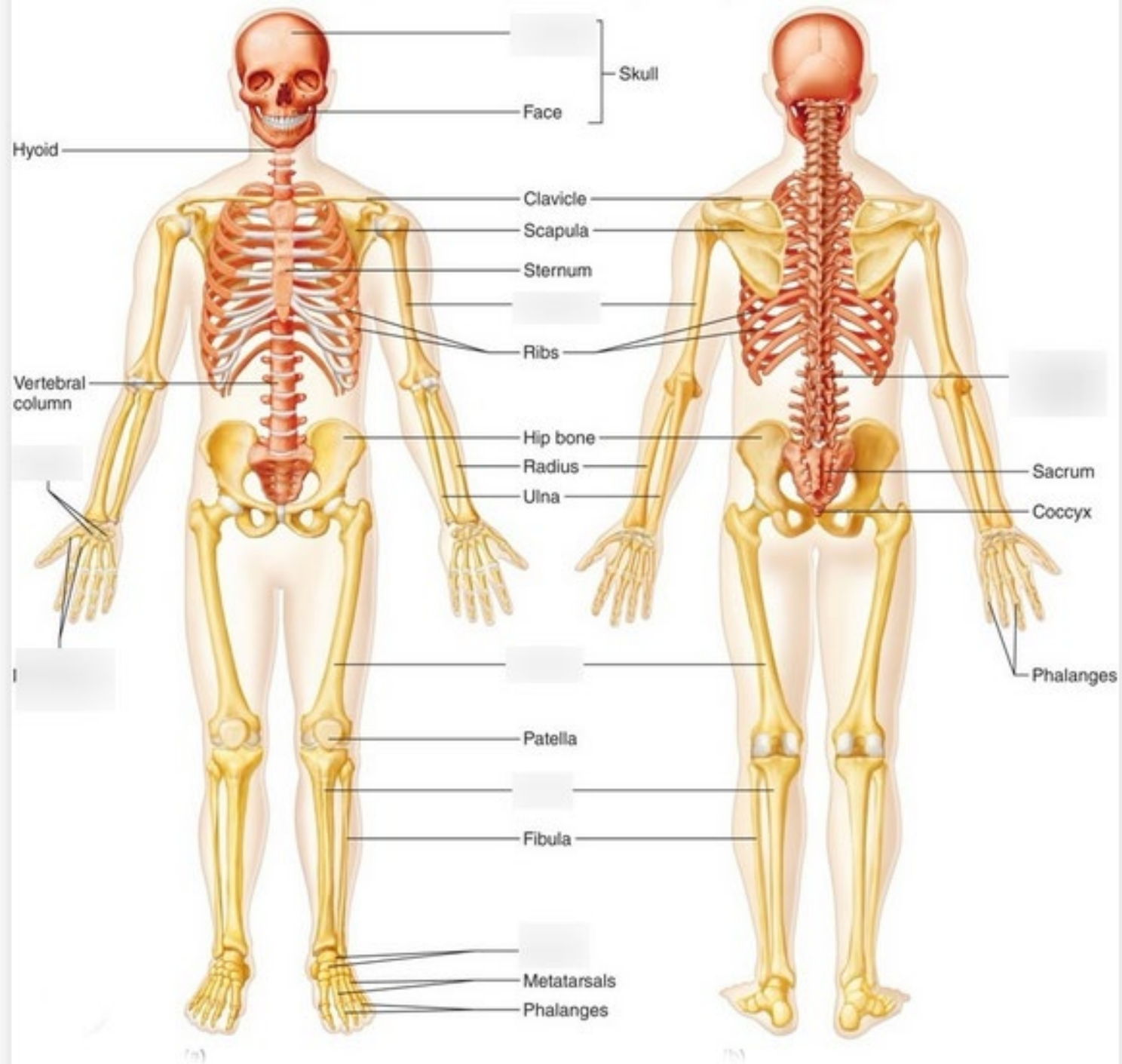


Appendicular Skeleton

- > Skull
- > Hyoid bone
- > Vertebral column
- > Thorax (rib cage)



Axial Skeleton





The skeleton is a collection of bone connected by articulations (joints).

Skeletal Muscles are attached to this framework and opposing muscles (extenders vs flexors) crossing over the articulation.

The brain may cause either an extender or flexor muscle to contract to generate a force across the articulation which results in movement.